

## **Transfection efficiency test**

Ilmin Kwon, Han Kyoung Choe, Insung Park and Kyungjin Kim

School of Biological Sciences, Seoul National University, Seoul 151-742, Korea

## Plasmid transfection efficiency test using Lipofectamine Plus and Metafectene EASY

### ● Purpose

:To compare transfection efficiency between **Lipofectamine PLUS** and **Metafectene EASY** in HeLa, NIH3T3 and WI-38 cell lines

### ● DNA construct

:Flag-tagged human Bmal1 (1 µg)

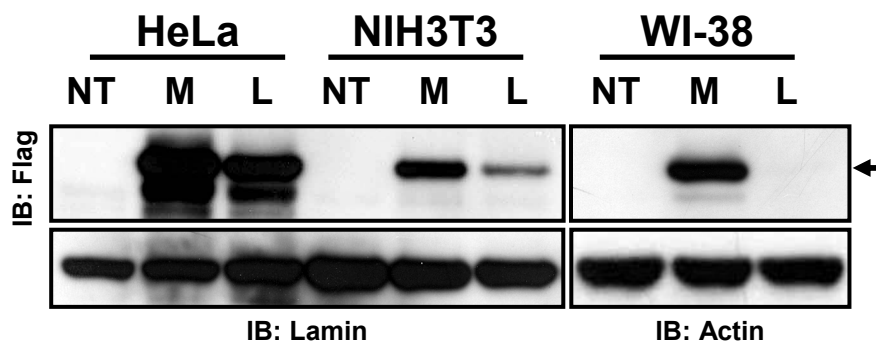
### ● Cell culture

: Cells were grown in DMEM supplemented with 10% fetal bovine serum (FBS, Invitrogen) and Penicillin-streptomycin (PS, Sigma) at 37 °C.

### ● Procedure

: Transfection was performed as manufacturer's protocol (12 well scale)

### ● Result



NT: No transfection

M: Metafectene EASY

L: Lipofectamine PLUS

### ● Discussion

:The Metafectene EASY exhibited higher transfection efficiency and lower cellular toxicity (not shown) in three cell lines tested.